



50 Wandsworth Road, London
SW8

GARTON JONES.COM



50 Wandsworth Road, London
, SW8

GARTON JONES.COM

9 Albert
Embankment
London
SE1 7SP

Sales +44 (0) 20 7735 1888
nineelms@gartonjones.com
www.gartonjones.com

£850 Per Week

A spacious 2-bedroom apartment to rent of approx. 810sq.ft (75.20sq.m) available to rent in Bach House, located within the Nine Elms Point development by Barratt London. This property benefits from a dual aspect open plan reception room with a smart kitchen with AEG integrated appliances including a wine cooler, there is a large private balcony, 2 luxury bathrooms (1 en-suite) and good storage including a utility cupboard housing and fitted wardrobes to the master bedroom.

Nine Elms Point has a 24-hour concierge, residents' gym, business suite and a cinema screening room. Nine Elms Tube Station is conveniently located next door to Nine Elms Station as well as being a few minutes' walk from the excellent transport services of Vauxhall including rail, tube, and bus links as well as a river taxi pier at St George Wharf.

Please note furniture may differ to that shown in the current photos.

- Electricity Supply — Mains | Water Supply — Mains | Sewerage — Mains | Heating — Underfloor Heating
- Broadband & Mobile Signal : Check Coverage via Ofcom
- Parking: No Parking Included
- Lift Access
- Building Safety: EWS1 Available on Request
- Council Tax Band F (London Borough of Lambeth)
- 5 Week Security Deposit
- Holding deposit equivalent to 1 week of rent
- Rent to be payable monthly in advance
- EPC Rating B (85)

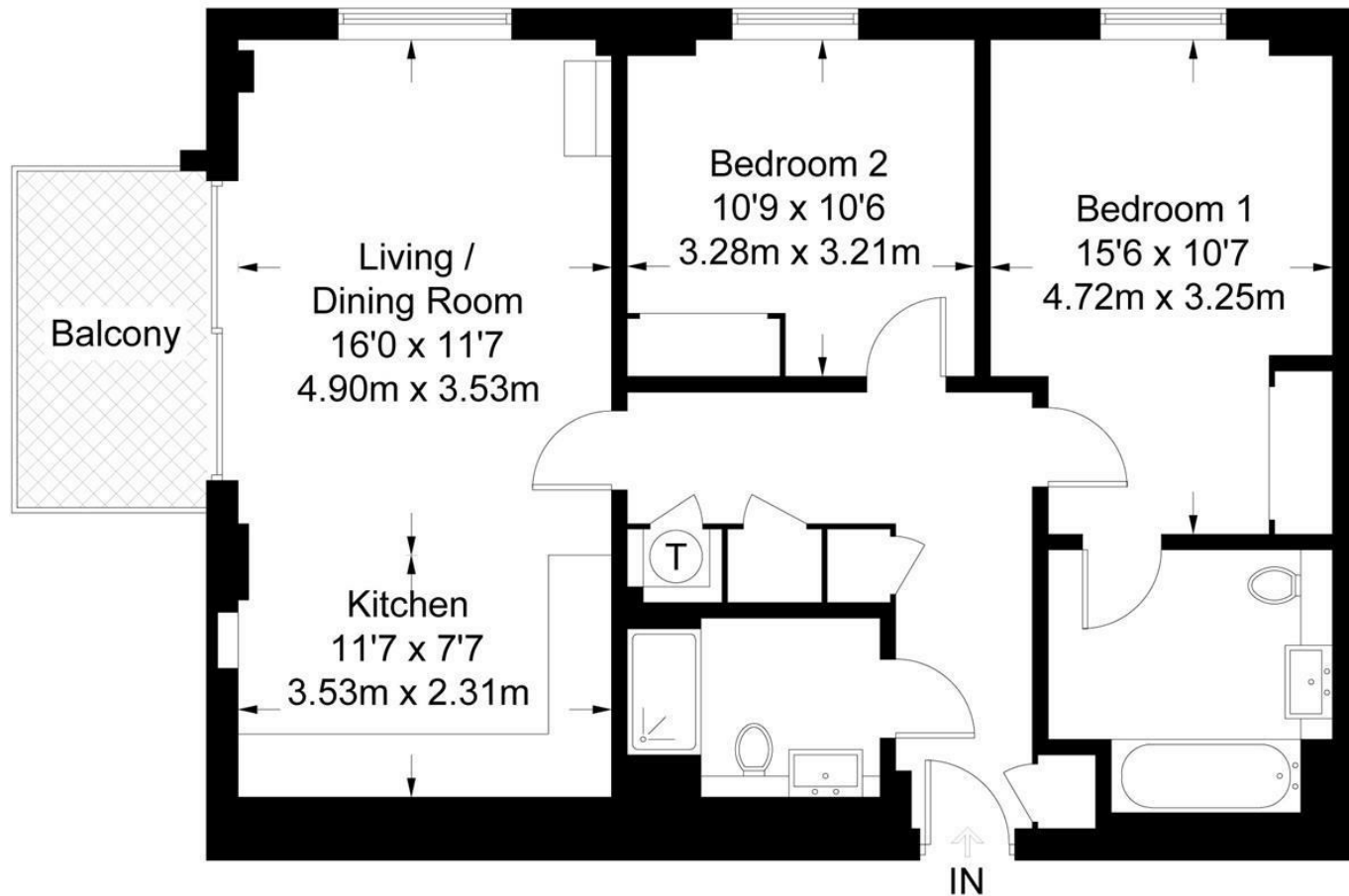
- 2 Bedrooms
- 810sq.ft (75.2sq.m)
- 2 Bathrooms (1 En-Suite)
- Open Plan Reception
- Dual Aspect
- Large Private Balcony
- 24 Hour Concierge
- Residents Gym
- Cinema Screening Room
- 0.1 Miles from Nine Elms Station



EPC certificate available on request.

Bach House

Approximate Gross Internal Area = 810 sq ft / 75.2 sq m



Seventh Floor

Not to scale, for guidance only and must not be relied upon as a statement of fact.
All measurements and areas are approximate only and have been prepared in
accordance with the current edition of the RICS Code of Measuring Practice.

